

Indoor Desiccant Dehumidification AHU with an Active Regen Energy Wheel

MARKET: Industrial Manufacturing

This XeteX basis of design indoor dehumidifier uses a desiccant wheel to deliver dry air for a glass manufacturing production and storage area. Solid state desiccant is a proven method to reliably deliver much drier air than conventional mechanical means. To ensure proper bonding during the glass lamination process, the space must maintain an RH as low as 20%. This is achieved using a high temp reactivated desiccant dehumidification wheel, pre and post hot water and chilled water coils, a Regen indirect fired gas furnace, and quality filtration throughout.

CONSTRUCTION

- Indoor unit; 2" double wall casing; injected foam (R-value 14/in) insulation; 18ga galvaneal exterior casing with acrylic paint; 20ga galvanized interior casing
- 8" structural aluminum C-channel welded base with acrylic paint
- 16ga galvanized floors with PolyIso Foam (R- 6.0/in)
- 304 SS drain pan

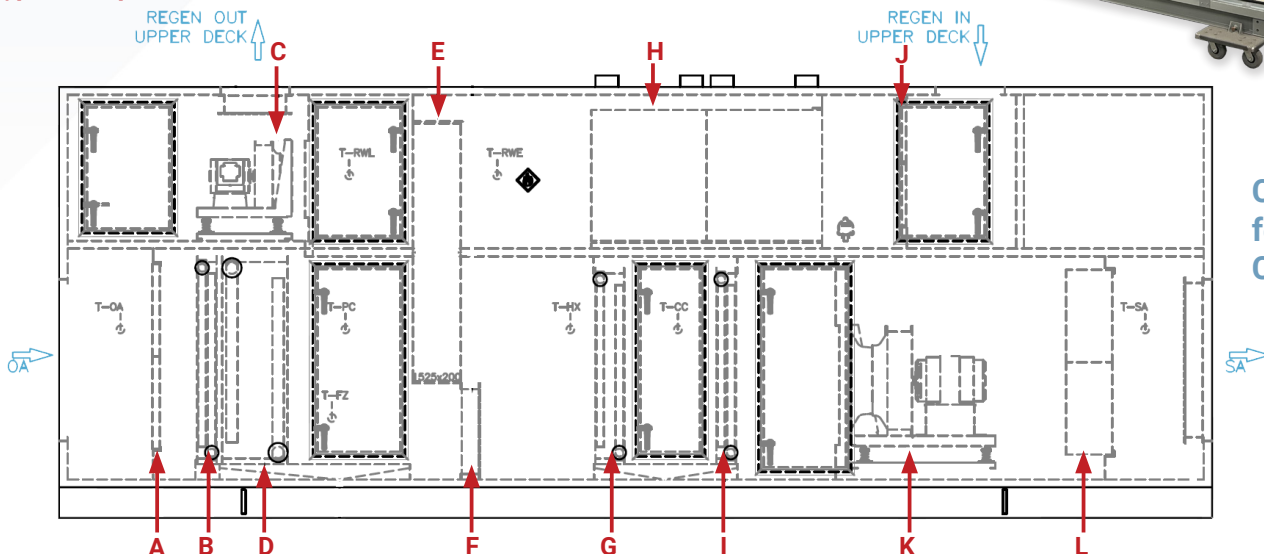
FEATURES

- **Factory mounted Carel DDC Controller programmed for full unit control**
- OA/EA motorized dampers and actuators
- Regen outlet discharge air damper
- SA PIEZO flow ring

COMPONENTS

- A. OA 2" MERV 8 with galv. rack**
- B. Pre-heat hot water coil**
- C. Premium Regan fan**
- D. Pre-cooling chilled water coil with 304 SS drain pan**
- E. Active Regen desiccant wheel**
- F. Bypass damper**
- G. Post-cooling chilled water coil with SS casing**
- H. 409 SS indirect fired gas furnace**
- I. Post-heat hot water coil**
- J. Regen 2" MERV 8 with galv. rack**
- K. Premium SA fan with PIEZO flow ring**
- L. SA 12" MERV 14 with galv. rack**

Model:	DXH-1525-BP-PHW-PCW-CW-HW-HI-FF
Dimensions:	112"H x 300"L x 104"W
Weight:	14,600 lbs
Supply CFM:	12,000 CFM
Regen CFM:	3,353 CFM
Heating Types:	Regen: Indirect Fired Gas Furnace General: Pre and Post Hot Water Coils
Heating Capacity:	Indirect Fired Gas Furnace: 451MBH Pre: 833 MBH/Post: 440 MBH
Cooling Types:	Pre and Post Chilled Water Coils
Cooling Capacity:	Pre: 1144 MBH/Post: 219 MBH



Contact XeteX
for your next
Custom AHU!

XeteX.com