

Custom DOAS with Energy Wheel & Packaged DX with Water Source Heat Pump

MARKET: Education

Designed for an academic facility, this XeteX custom dedicated outdoor air system (DOAS) is one of four units in this project. Unique features include 100% outdoor air, energy efficient heating and cooling using an enthalpy energy recovery wheel with full season controls, pre-heat and pre-cool coils to a building loop, and perforated liners in SA/EA fan sections.

CONSTRUCTION

- Outdoor unit with **thermal break construction**
- 4" double wall casing and injected foam (R-value 28) insulation; 16ga galvaneal outer casing with acrylic paint; 20ga galvanized interior casing
- 16ga galvanized floor with 4" injected foam (R-value 28) insulation
- Welded 8" steel base frame with lifting lugs and acrylic paint
- **1/8" aluminum tread plate floors with 2" upturn lip, wash-down capable with drains**
- 304 SS drain pan

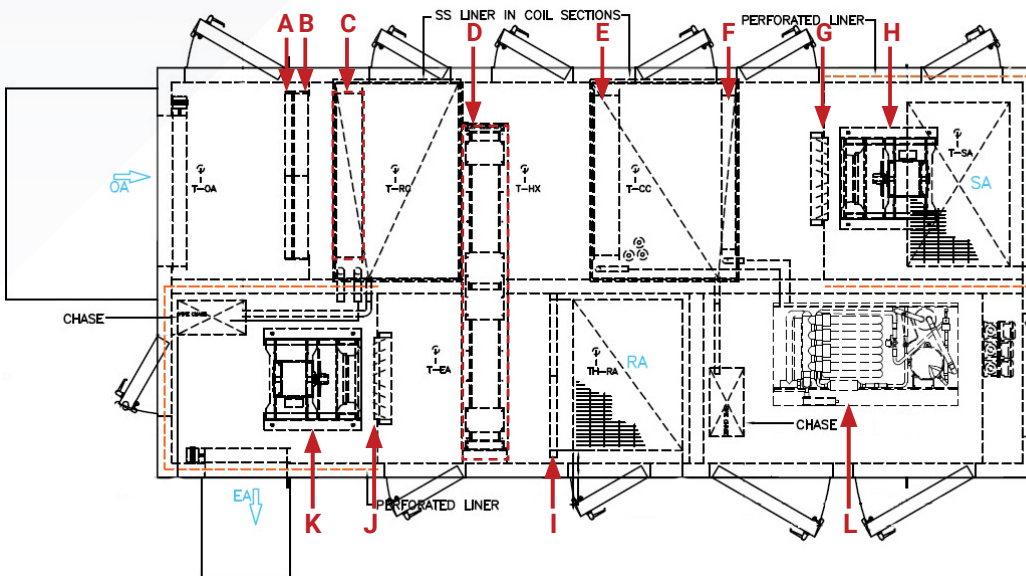
| | |
|---------------------------------------|---|
| Model: | AVR-2500-RT-RW-DX-HG-HP-FF |
| Dimensions: | 120"H x 254"L x 116"W |
| Weight: | 21,500 lbs |
| Supply CFM: | 14,675 CFM |
| Heating Types/ Heating Capacities: | DX Heating Coil: 282 MBH Hot Gas Reheat: 279 MBH |
| Cooling Type: | DX Cooling Coil |
| Cooling Capacity: | 52 Tons |
| Energy Recovery: | Enthalpic Energy Wheel |
| Energy Effectiveness: | Winter: 72% / Summer: 70% |



FEATURES

- **3Å enthalpy energy wheel with full season controls**
- **Energy recovery water coil**
- **Integral air cooled section contains multiple staged compressors and a VFD lead**
- **2" perforated liners located in SA/EA fan sections**
- **IP 65 rated unit LED lights and GFI; 65 kAIC**
- **Factory mounted controls**
- **Heating and cooling coil sections include a stacked coil rack and 304 SS liner**
- **SA/EA: 2" spring seismic isolators, Piezo flow rings and fan back draft dampers**

COMPONENTS



- A. OA 2" MERV 8 filters with galvanized rack
- B. SA 4" MERV 13 filters with galvanized rack
- C. Energy recovery coils with SS casing
- D. Enthalpy energy wheel
- E. DX coil with SS casing
- F. Hot gas reheat coil with SS casing
- G. SA back draft damper
- H. SA two premium plenum fan array
- I. RA 2" MERV 8 filters with galvanized rack
- J. EA back draft damper
- K. EA two premium plenum fan array
- L. Heat pump skid

Contact XeteX for your next Custom DOAS!

XeteX.com