

Custom Indoor Air Handlers with 100K CFM for a Lithium-ion Battery Plant

MARKET: Manufacturing

Designed specifically for one of the nation's largest lithium-ion battery manufacturing facilities, this XeteX project showcases one of 15 custom indoor air handlers. Each unit features 2,411 MBH chilled water coil cooling; 100K CFM utilizing Acoustiflo SA fans with integral inlet dampers; and perforation liners for sound attenuation.

CONSTRUCTION

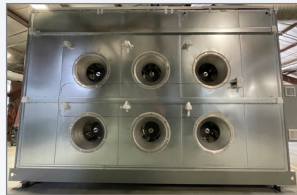
- Indoor **three-section split unit**
- **3" double wall thermal break construction** with injected foam (R-value 21) insulation; 18ga galvaneal outer casing with **acrylic paint**; 20ga galvanized interior casing
- **10" structural steel base frame** with welded lifting lugs and acrylic paint
- 16ga galvanized unit floor with 2" injected foam (R-14) insulation
- 304 SS drain pan

FEATURES

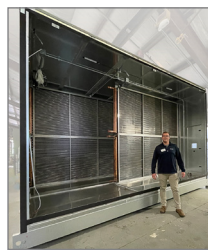
- **SA Acoustiflo fans with integral inlet dampers**
- **SA perf liner**
- Piezo pressure port and fan backdraft damper
- Recirculation damper
- Modulating actuator

COMPONENTS

- A. Filter pressure gauge**
- B. OA 4" MERV 8**
- C. Unit splits**
- D. Chilled water coils**
- E. SA Acoustiflo plenum six-fan array**
- F. SA fan back draft damper**



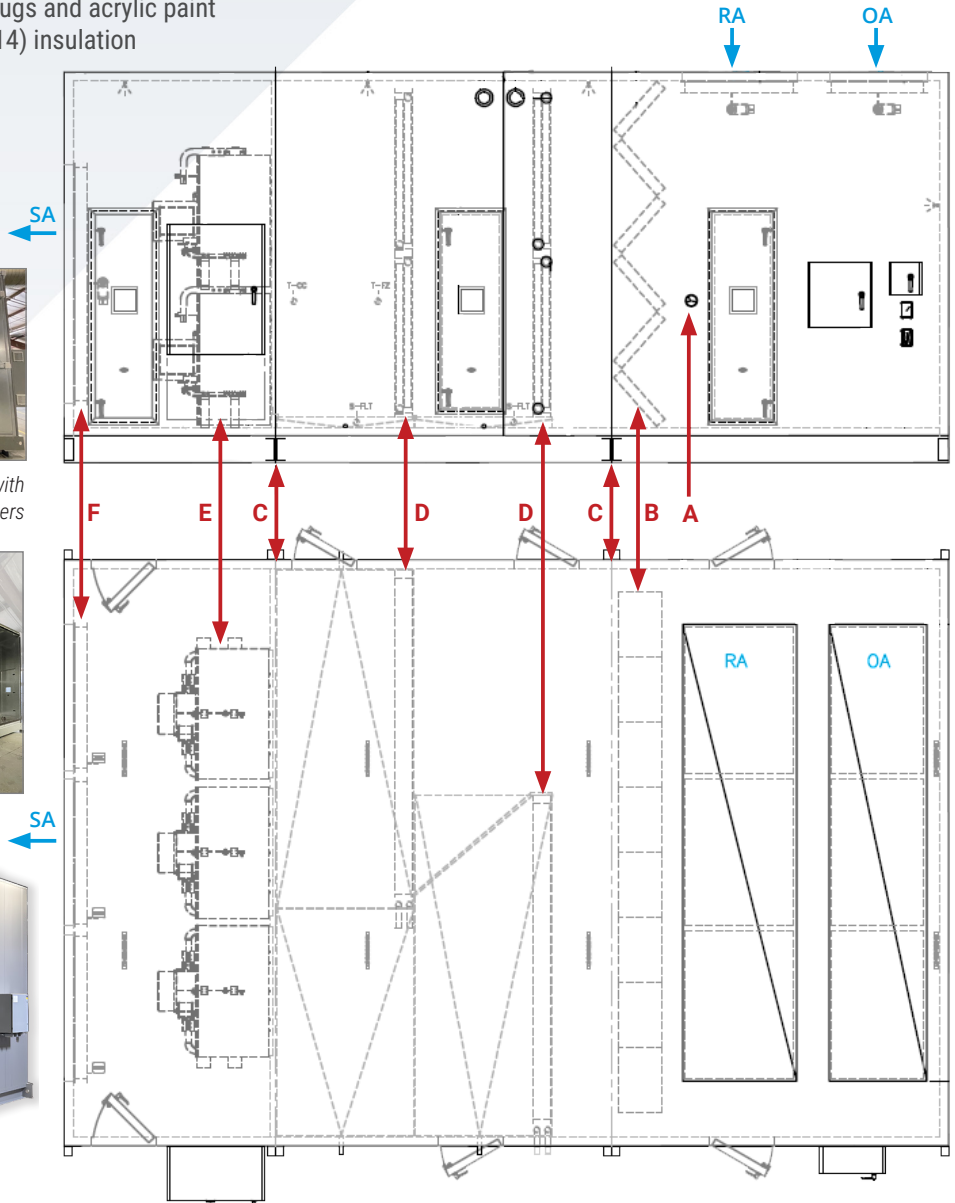
SA Acoustiflo fans with integral inlet dampers



A six-foot-ten engineer stands next to the chilled water coil split section.



Model:	XAH-100000-CW-RC
Dimensions:	144"H x 322"L x 216"W
Weight:	25,700 lbs
Supply CFM:	100,000 CFM
Cooling Type:	Chilled Water Coil
Cooling Capacity:	2,411 MBH



Contact XeteX for your next Custom Air Handler!

XeteX.com