

Custom ERU with Corrosion Resistant Design, HX, Packaged DX and WSHP

MARKET: Natatorium

This XeteX custom indoor energy recovery unit for a school natatorium features a corrosion-resistant design with aluminum construction and epoxy-coated coils, an energy efficient flat plate heat exchanger, packaged DX WSHP, hot gas reheat, and a HW coil. The six-section split design accommodates indoor installation.

CONSTRUCTION

- Indoor **six-section split unit**
- 2" double wall **thermal break construction** with injected foam (R-value 14/in) insulation; 18ga galvaneal steel outer casing; 0.080 aluminum interior casing for corrosion resistance
- Welded 4" c-channel structural steel base frame with lifting lugs and acrylic paint
- 0.063 aluminum floor with 2" injected foam (R-value 6.9/in) insulation
- Aluminum drain pan

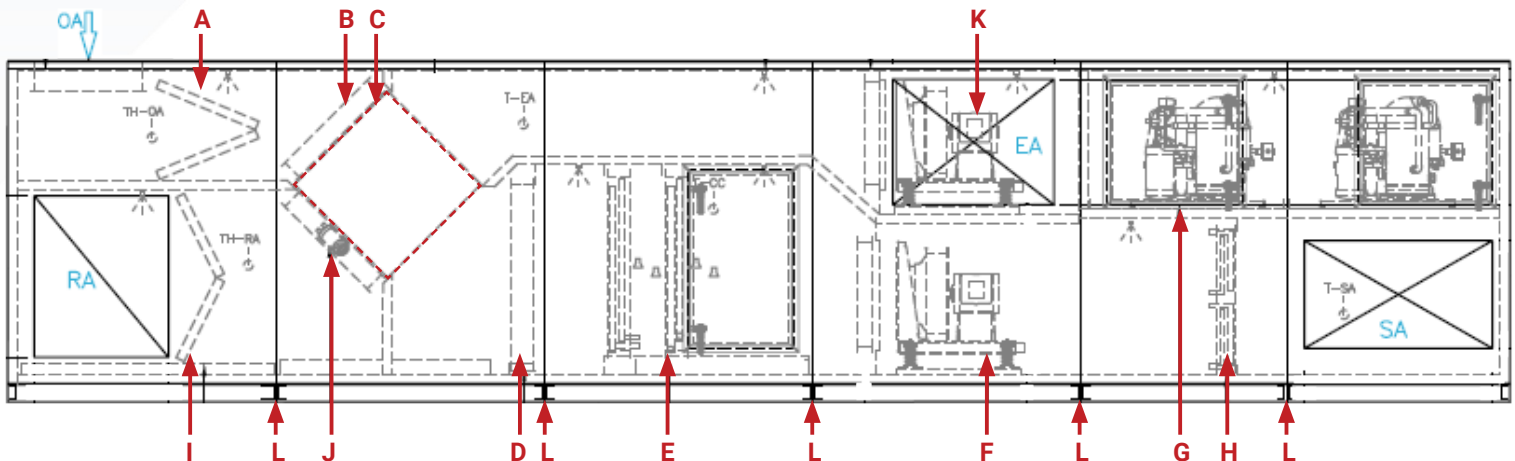
FEATURES

- **Factory mounted Carel DDC controller programmed for full unit control**
- **Integral water-cooled section with multiple staged compressors and a digital lead employing a water source heat pump**
- **Aluminum sensible flat plate heat exchanger**
- **Epoxy-coated HW, HGRH and DX coils**
- SA/EA premium three fan plenum array with PIEZO flow rings

COMPONENTS

- A. OA 2" MERV 8 filters with alum. rack
- B. Face and bypass damper
- C. Aluminum flat plate HX
- D. Epoxy-coated hot water coil
- E. Two staggered epoxy-coated DX coils
- F. SA premium three plenum fan array
- G. WSHP section
- H. Hot gas reheat coil
- I. RA alum. mesh filters with alum. rack
- J. Recirculation damper
- K. EA premium three plenum fan array
- L. Unit splits

Model:	XHS-30-96-BP-DX-HW-HG-RC-HP
Dimensions:	76"H x 336"L x 136"W
Weight:	15,000 lbs
Supply CFM:	17,500 CFM
Energy Recovery:	Sensible Flat Plate Heat Exchanger
Energy Effectiveness:	Winter: 79% / Summer: 64%
Heating Types:	Hot Water Coil Hot Gas Reheat
Heating Capacity:	Hot Water Coil: 689 MBH Hot Gas Reheat: 245 MBH
Cooling Type:	Cooling DX WSHP
Cooling Capacity:	68 Tons



Contact XeteX for your next Custom ERU!

XeteX.com