

Custom ERU with Coated HX, Aluminum Construction & Explosion-Proof Motors

MARKET: Waste Water Treatment Plant

This XeteX project highlights one of two custom energy recovery units for a waste water treatment plant. For lasting performance in harsh conditions, this ERU includes aluminum construction, an epoxy-coated flat plate heat exchanger, and explosion-proof SA and EA motors.

CONSTRUCTION

- Outdoor unit
- **Thermal break construction** with 2" double wall casing with injected foam (R-value 14/in) insulation; 0.063" aluminum exterior casing; 0.063" aluminum interior casing
- 6" structural **aluminum base frame with welded lifting lugs**
- Aluminum floors with injected foam (R-value 6.9/in)
- 304 SS drain pan

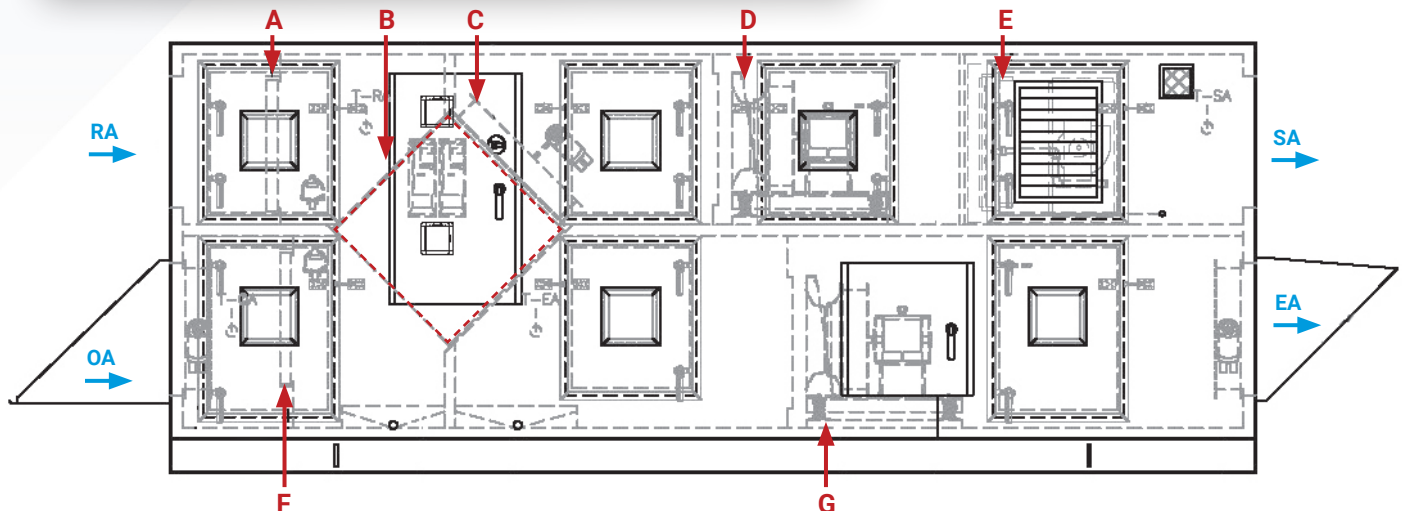
OTHER FEATURES

- **Factory mounted Carel DDC controller and programmed for full unit control**
- SA and EA aluminum premium plenum fans with explosion-proof motors
- SA and EA PIEZO flow rings

Model:	XHS-30(18)-54-RT-BP-HI
Dimensions:	78"H x 78"W x 198"L
Weight:	3,850 lbs
Energy Recovery:	Sensible Flat Plat HX
Energy Effectiveness:	Winter: 61%
Heating Type:	Indirect Fired Gas Heater
Heating Capacity:	278 MBH
Supply CFM:	4,000 CFM

COMPONENTS

- A. 2" MERV 8 EA with aluminum rack
- B. Epoxy-coated aluminum sensible flat plate heat exchanger
- C. HX modulating face & bypass damper control
- D. SA aluminum plenum fan with explosion-proof motor
- E. 409 stainless steel indirect fired gas furnace
- F. 2" MERV 8 OA with aluminum rack
- G. EA aluminum plenum fan with explosion-proof motor



Contact XeteX for your next Custom ERU!

XeteX.com