

FEATURED UNIT: Outdoor 267 Ton Custom Water Source Heat Pump Unit

MARKET: University

This project showcases XeteX innovative design and manufacturing capabilities featuring a custom outdoor water source heat pump unit with 267 tons of cooling capacity and 60K CFM. This unit is one of the ten that have been specifically designed and manufactured for a prestigious Doctoral Research University. Custom units include three RTUs, three MAUs, two DOAS units, and two AHUs.

Construction

- **Four-split unit**
- Double wall gasketed thermal break construction: Heavy duty 20ga galv. ext. casing with PG acrylic; 18ga G90 galv. int. casing with **3" injected foam insulation**
- **Welded steel base frame**

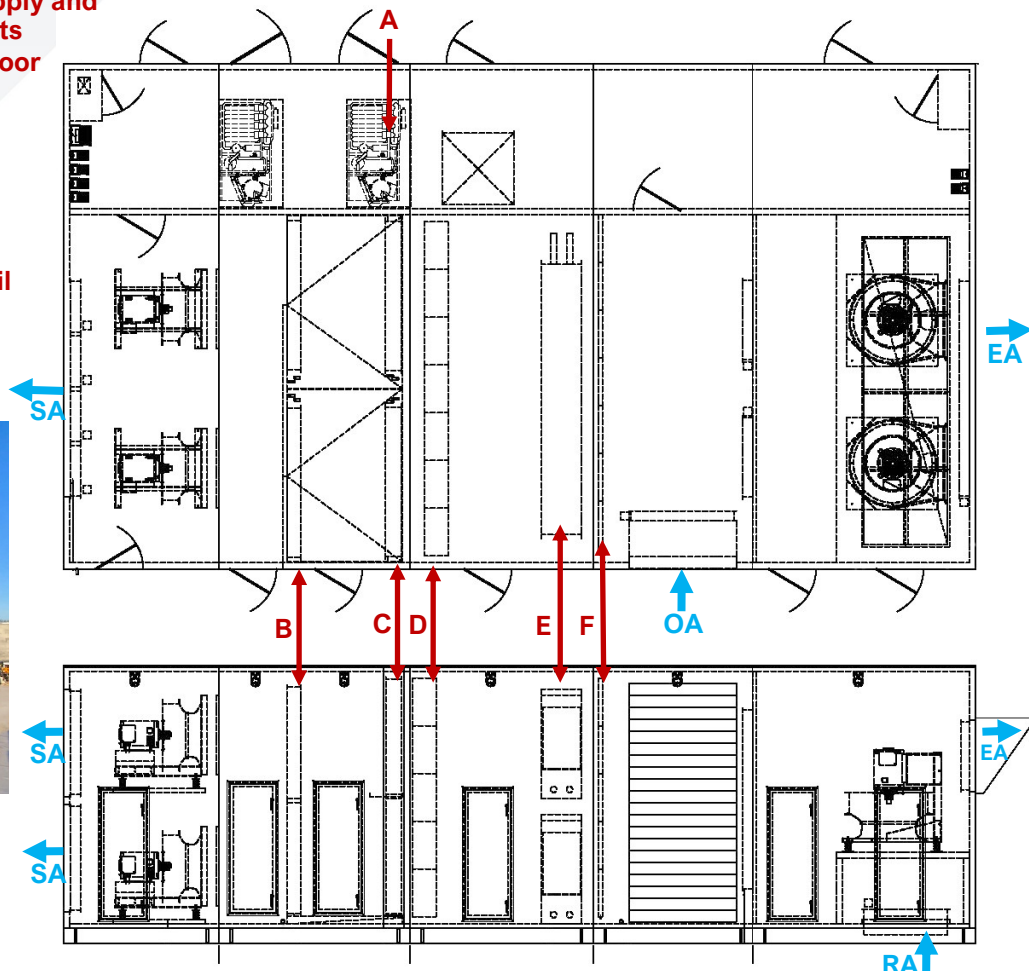
Other Features

- All Welded 304 SS Drain Pan
- SA outlet and EA inlet perf lined interior for acoustic dampening
- XeteX provided Controls
- **Factory Piped and Headered Single Supply and Return Water Connections for all Circuits**
- **Vestibule with Aluminum Tread Plate Floor**

Components

- A. **Water Supplied Heat Pump skids**
- B. **Hot Gas Reheat Coil**
- C. **WSHP DX Coil**
- D. **12" MERV 13 SA final filter**
- E. **Integral Face and Bypass Hot Water Coil**
- F. **2" Pleated MERV 8 OA**

Model:	XAH-60000-RT-RC-CD-HG-HW-FF-HP
Height:	140 in
Width:	254 in
Length:	458 in
Weight:	50,500 lbs
RA CFM:	42,000
OA CFM:	18,000
Supply CFM:	60,000
Cooling Capacity:	2,434 MBH
Tonnage:	267 Tons
Heating Capacity:	2,279 MBH



Contact XeteX today for your next Custom Air Handling System!